

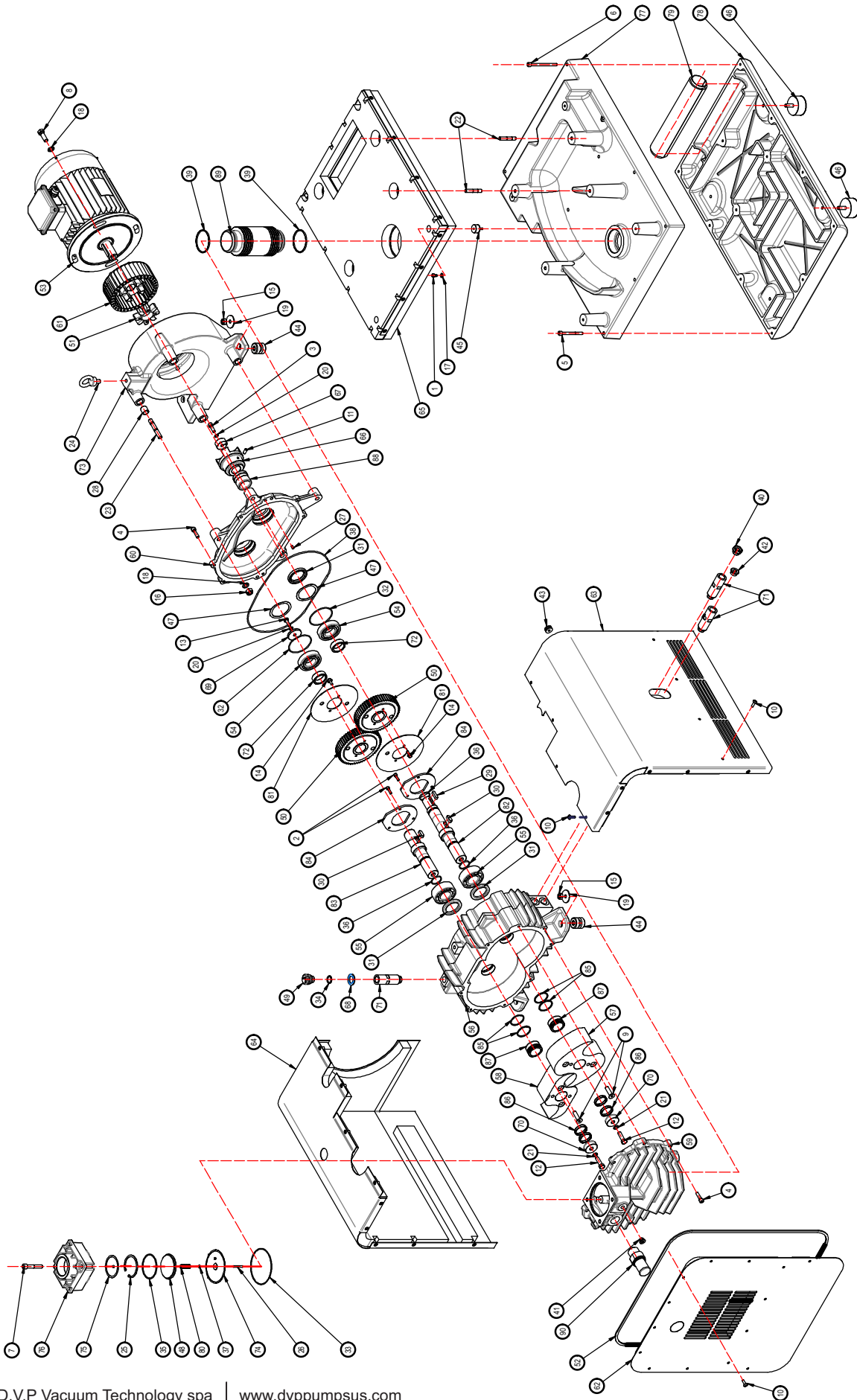
POS	Description	Part Number	QTY	Kit
1	Screw Cylindric Head M6X10	///	4	
2	Screw Cylindric Head M6x20	///	6	
3	Screw Cylindric Head M8x25	///	2	
4	Screw Cylindric Head M8x30	///	15	
5	Screw Cylindric Head M8x80	///	9	
6	Screw Cylindric Head M8x100	///	3	
7	Screw Cylindric Head M10x60	///	4	
8	Screw Hexagonal Head M12x35	///	4	
9	Screw TSCE M10x40	///	4	
10	Screw M6x20	///	30	
11	Screw without Head M8x16	///	1	
12	Screw Hexagonal Head M10x35	///	2	
13	Screw Hexagonal Head M8x25	///	1	
14	Screw Hexagonal Head M6x16	///	4	
15	Nut M10	///	4	
16	Nut M12	///	4	
17	Washer Ø6	0301004	4	
18	Washer Ø12	0301007	8	
19	Washer	0301010	4	
20	SCHNORR Washer Ø8	0303004	2	
21	SCHNORR Washer Ø10	0303010	2	
22	Stud Bolt M10x45	0402006	4	
23	Stud	0402008	4	
24	Eyebolt M12	0403002	1	
25	Seeger I70	0501012	1	
26	Cylindrical Pin Ø5x36	0601009	1	
27	Cylindrical Pin Ø6x12	0601012	2	
28	Spring Pin Ø20x20	0602009	4	
29	Key Type A 8x7x30	0701008	1	
30	Key Type A 10x8x25	0701015	2	
31	Shaft Seal A 45-62-7 FKM	0902004	3	X
32	O-Ring 3287 FKM	1001026	2	X
33	O-Ring 3425 VITON	1001056/V	1	X
34	O-Ring 3075 FKM	1001070/V	1	X
35	O-Ring 3268 VITON	1001074	1	X
36	O-Ring 3118 FKM	1001103	3	X
37	O-Ring 106	1001113	1	X
38	O-Ring	1001117	1	X
39	O-Ring 168 FKM	1001118	2	X
40	Aluminum Sight Glass 1/2"	1105009	1	
41	Knob 1/4" + O-Ring FKM	1110008	1	
42	Knob 1/2" + O-Ring FKM	1110010	1	
43	Cable Ø22x10xØ7	1203005	1	
44	Anti-Vibration	1501006	4	
45	Shock Mount	1503005	4	
46	Shock Mount M10	1503014	4	
47	Bearing 45-35-26	1601024	2	
48	Inlet Valve Plate	1703025	1	

Subject to change without prior notice

POS	Description	Part Number	QTY	Kit
49	Exhaust Filler Plug	1706021	1	
50	Gear	1707002	2	
51	Elastic Coupling	1901011	1	X
52	Red Profile	1905004	1	
53	Motor	2310004 (*)	1	
54	Bearing 6207	2401053	2	
55	Bearing 3207	2401054	2	
56	Pump Body	3001197	1	
57	Motor Rotor	3110007	1	
58	Motor Rotor	3110008	1	
59	Front Cover	3202085	1	
60	Rear Cover	3202086	1	
61	Fan Group	3610020	1	
62	Front Cover	3703082	1	
63	Side Cover	3703083	1	
64	Side Cover	3703084	1	
65	Base Cover	3703085	1	
66	Half-Coupling	3801020	1	
67	Washer	4001020	1	
68	Felt Washer	4001053	1	X
69	Washer	4001054	1	
70	Conical Ring Lock Washer	4001055	2	
71	Nipple	41110007	3	
72	Spacer	4201046	2	
73	Motor Interface	4302044	1	
74	Filter Disc Ø104xØ5.2	4503029	1	
75	Filter Disc Ø70xØ0.3	4503050	1	
76	Inlet Fitting	4508050	1	
77	Upper Silencer	4601034	1	
78	Lower Silencer	4601035	1	
79	Inner Sleeve	4601036	1	
80	Spring	4701031	1	
81	Oil Spreader	4801079	2	
82	Motor Shaft	4803073	1	
83	Shaft	4803074	1	
84	Blocking Washer	4805006	2	
85	Seal Ring	4807012	4	
86	Conical Ring	4807013	4	
87	Bearing 45-35-26.1	4810013	2	
88	Shaft Ring	4810015	1	
89	Exhaust Sleeve	5004050	1	
90	Safe Valve	9004029	1	

\* DEPENDING ON THE OPERATING VOLTAGE OF THE ELECTRIC MOTOR THE TECHNICAL CODE MAY CHANGE.

Subject to change without prior notice



Subject to change without prior notice